

가 :
^{99m}TC-ECD SPECT

Regional Cerebral Blood Flow Changes in Alzheimer's Disease Patients Treated with Cholinesterase Inhibitors: A Preliminary Study using ^{99m}TC-ECD SPECT

Mee Young Park, M.D., Ihn ho Cho, M.D.*

Department of Neurology and Nuclear Medicine, College of Medicine, Yeungnam University*

Background: This study aimed to evaluate regional cerebral blood flow (rCBF) changes using ^{99m}TC-ECD SPECT (Ethylene Cysteine Diethylester Single Photon Emission Computed Tomography) and contemporary clinical responses such as cognitive and psychiatric symptoms and activities of daily living (ADL) after cholinesterase inhibitors (ChEI) treatment. **Methods:** The subjects were eight probable Alzheimer's disease (AD) patients (four males and four females, mean age 69.63 years) who were recruited from the department of Neurology, at Yeungnam University Medical Center, between August 2000 and April 2002. The clinical diagnosis of AD was based on the DSM- and NINCDS-ADRDA criteria. Hachinski ischemic scores of all the patients were below 1. The mean treatment duration was 30.38 weeks which ranged from 24 to 44 weeks. Four patients received Rivastigmine (Exelon) 12 mg after titration, and three patients received Donepezil (Aricept) 10 mg during the whole period and only one patient had Donepezil 10 mg after the initial 5 mg for three weeks. The base line and follow up ^{99m}TC-ECD SPECT studies were done on an average 6 days before the ChEI treatment and 4 days after finishing the study. **Results:** The most significant increase in blood flow occurred in the bilateral parietal lobes (p<0.05). Reduction in the rCBF is more profound on the left hemisphere in the base line (p<0.05) and it achieved significant increase of rCBF after ChEI treatment compared with the right hemisphere (p<0.05). **Conclusions:** Treatment with ChEI for 30.38 weeks increased rCBF and overall increased in global cognitive functions including K-MMSE, ADAS-cog, CDR, CDR-SB, GDS, and NPI and ADCS-ADL scores.

J Korean Neurol Assoc 21(3):255~260, 2003

Key Words: Alzheimer's disease, Cholinesterase inhibitors, Regional cerebral blood flow, ECD-SPECT

(AD) acetylcholine (Ach)
 1 Ach acetylcholine transferase (CAT)
 acetylcholinesterase (AChE)
 (Cholinesterase)

inhibitor: ChEI) Ach가

Ach 가

2

Brain MRI

Brain SPECT

가

가

Manuscript received July 11, 2002

Accepted in final form February 12, 2003

* Address for correspondence

Mee Young Park, M.D.

Department of Neurology, College of Medicine,

Yeungnam University, 317-1 Daemyung-dong,

Nam-gu, Daegu, 705-717, Korea

Tel: +82-53-620-3682, Fax: +82-53-627-1688

E-mail: mypark@med.yu.ac.kr

3

4

ChE기 AD
가

5-

8

(modify)

AD ChE기 가 1.

9

10 2000 8 2002 4

(rCBF: regional Cerebral Blood Flow) 가

11

가ChE기

가

AD Donepezil ^{99m}Tc - HMPAO

SPECT 가 가

12 orbital dorsolateral frontal

rCBF기 (irritability) (euphoria) ChE기

AD

가

13

rCBF기

ChE기 AD

AD 가

9-11

AD 가 ChE기

SPECT ChE기

AD

ChE기

1. DSM dementia criteria NINCDS/ADRDA (National Institute for Neurological and Communicative disorders and Stroke/Alzheimer's Disease and Related Disorders Association) criteria probable AD 8 (MRI ChE기

Hachinski 가 4

Hachinski 1

61 78 69.63

±5.60 ChE기 rivastigmine (Exelon) 4

donepezil (Aricept) 4

Rivastigmine 3 mg 4

6 mg, 9 mg 4

12 mg Donepezil 1

3 5 mg 4 10 mg 3

10 mg

ChE기 24 44

30.38±7.82

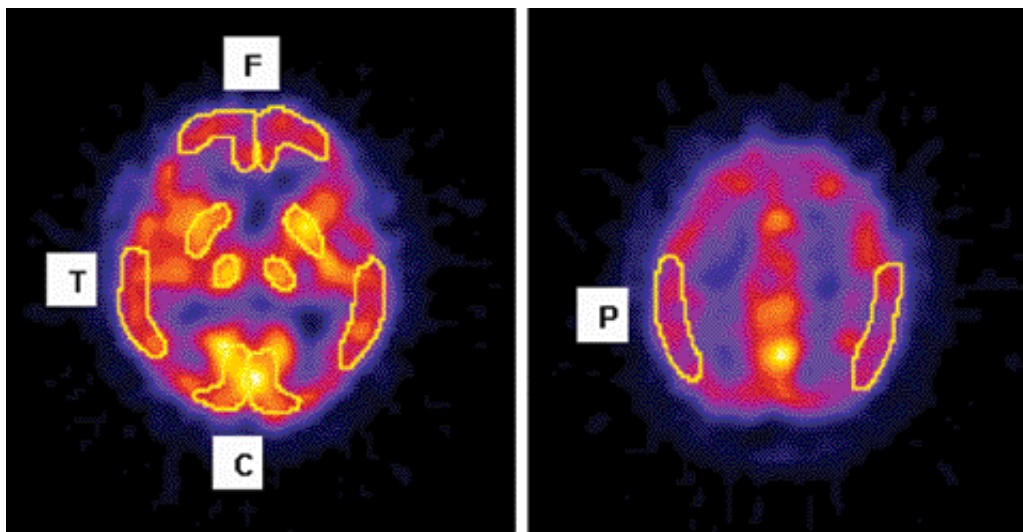


Fig. 1. Regions of interest
F; frontal, T; temporal, P; parietal, C; cerebellum

2. SPECT SB (Clinical Dementia Rating Sum of Box) NPI
 (Neuropsychiatric Inventory)¹⁴ ADCS - ADL
 (^{99m}Tc - Ethylene Cysteine Diethylester (ECD) SPECT ChEI 6 (0~7)
 SPECT ChEI 4 (1~7) rCBF (Alzheimer's Disease Cooperative Study - Activities of Daily Living)
 SPECT Wilcoxon matched - pairs signed - ranks test
 (E - cam, Siemens, Germany)

10 740 MBq ^{99m}Tc - ECD
 1 20 , 128 x 128 3
 120

Butterworth ChEI rCBF RCR 0.06
 Chang 가 ChEI rCBF가 가
 (ROIs: regions of interest) (p<0.05). RCR
 ROI (count) ChEI 0.03 가
 (RCR: region to cerebellar ratio) (Table 1). , rCBF 가
 (Fig. 1). 0.84±0.09, 0.87±
 AD , 가 0.09 (p<0.05) (Table 2), rCBF ,
 RCR 0.88±0.08 0.89±0.09 rCBF가 ChEI

$$RCR = \frac{\text{Mean Count of ROI}}{\text{Mean count of cerebellar hemispheres ROIs}}$$
 가
 (p<0.05) (Table 3).
 ChEI ROI RCR ADAS - cog, K -
 Wilcoxon matched - pairs MMSE, CDR, CDR SB, GDS, NPI, ADCS - ADL
 signed - ranks test ChEI ADAS -
 cog 28.50±18.12 8 52 ChEI
 3. 23.25±8.96 5.25가
 K - MMSE ChEI 가 1 25
 ChEI 1 1 7 10
 , ChEI 6 (0~7) 14.63±8.73 0.62
) 3 (0~7) 15.25±7.22 CDR ChEI 가
 K - MMSE (Korean Version Mini 0.5 3 1.44±0.94 0.13
 Mental State Examination), ADAS - cog (Alzheimer's 1.31±0.92 CDR SB ChEI
 Disease Assessment Scale - cognitive subscale) 가 3.5 16 8.25±4.42 0.44
 GDS (Global Deterioration 7.81±4.46 GDS ChEI
 Scale) CDR (Clinical Dementia Rating) CDR 가 3 6 4.63±1.41 0.25

Table 1. RCRs in each lobes (mean±s)

ROIs	Frontal lobe		Temporal lobe		Parietal lobe	
	Rt	Lt	Rt	Lt	Rt	Lt
Pre-CHEI	0.86±0.10	0.85±0.11	0.87±0.11	0.82±0.10	0.87±0.08	0.85±0.06
Post-CHEI	0.89±0.11	0.88±0.10	0.87±0.09	0.85±0.09	0.93±0.07*	0.91±0.04*

*P<0.05, ROIs; regions of interest, RCR; region to cerebellar ratio, CHEI; cholinesterase inhibitor, Lt; left, Rt; right

Table 2. Base line RCRs in each hemispheres (mean±s)

RCR \ ROIs	Rt. hemisphere (F+T+P)	Lt. hemisphere (F+T+P)
Pre-CHEI	0.87±0.09	0.84±0.09*

*P<0.05, F: frontal lobe, T: temporal lobe, P: parietal lobe, ROIs: regions of interest, RCR: region to cerebellar ratio, CHEI: cholinesterase inhibitor

Table 3. Changes of RCRs in each hemispheres (mean±s)

RCR \ ROIs	Rt. hemisphere (F+T+P)	Lt. hemisphere (F+T+P)
Pre-CHEI	0.87±0.09	0.84±0.09
Post-CHEI	0.89±0.09	0.88±0.08*

*P<0.05, F; frontal lobe, T; temporal lobe, P; parietal lobe, CHEI; cholinesterase inhibitor, ROIs; regions of interest, RCR; region to cerebellar ratio

Table 4. Changes in neuropsychological test scores (mean±s)

Scores \ Scales	ADAS-cog	K-MMSE	CDR	CDR SB	GDS	NPI	ADL
Pre-AchEI	28.50 (±18.12)	14.63 (±8.73)	1.44 (±0.94)	8.25 (±4.42)	4.63 (±1.41)	18.00 (±21.59)	53.50 (±10.85)
Post-AchEI	23.25 (±8.96)	15.25 (±7.22)	1.31 (±0.92)	7.81 (±4.46)	4.38 (±1.19)	16.88 (±18.08)	58.00 (±9.76)
Difference	-5.25	0.62	-0.13	-0.44	-0.25	-1.12	4.5

Positive and negative, both values stand for improvements, K-MMSE; Korean-Version Mini Mental State Examination, ADAS-cog; Alzheimer's Disease Assessment Scale-cognitive subscale, ADCS-ADL; Alzheimer's Disease Cooperative Study-Activities of Daily Living, CDR; Clinical Dementia Rating, CDR SB; Clinical Dementia Rating Sum of Box, GDS; Global Deterioration Scale, NPI; Neuropsychiatric Inventory, CHEI; cholinesterase inhibitor

4.38±1.19 (NPI)
(ADCS - ADL)
,
rCBF
rCBF 가
AD 가

1 59 18.00±21.59 1.12
16.88±18.08 . ADCS - ADL ChEI rCBF가
ChEI 가 41 64 53.50±10.85 가
4.50 58.00±9.76 가

(Table 4).

ROI
rCBF 가
, rCBF ChEI (p<0.05),
ChEI rCBF가 가 가 (p<0.05).
가
가 AD 15-17
가
가 ChEI
가 30
ChEI 가 가 1 K -

MMSE가 3 . AD ChEI 20 가 ChEI 가
가 가 가 NPI ChEI 가 가 ,
AD 가 (heterogenous) ,
가

NPI ADCS - ADL 가 ChEI
가 AD가 ChEI
AD 35 Donepezil rCBF ChEI ChEI가
rCBF AD AD
rCBF가 가 11 ChEI ChEI 가
가 ChEI (ischemic core)
rCBF가 가 21
SPECT AD 가
50 (가 17~99) 가 AD 가
가 ChEI
ChEI가 가 가 AD 가
가 가 rCBF
가 ChEI AD ADAS - cog, K - MMSE, CDR, CDR SB, GDS
AD ChEI NPI, ADCS - ADL
AD ADAS - cog
AD 9 11
Donepezil 12 AD ^{99m}Tc - 22 5.25
ECD SPECT Donepezil AD MMSE CDR SB
rCBF가 rCBF 가 ChEI 2.8 ²³⁻²⁴ 2.4 ²⁵
ChEI K - MMSE 0.62
CDR SB 0.44

⁹ Rivastigmine 6~9 mg 6 AD 8 (: =4:4) ChEI
16 12 가가 24 44 ^{99m}Tc - ECD SPECT
4 가 Rivastigmine rCBF

가 , ¹⁰ 1. rCBF가 가 (p<0.05).
2. ChEI rCBF가
(p<0.05), ChEI rCBF

masking ChEI rCBF 가가
가 ChEI 가 . rCBF가 가 (p<0.05).
3. ADAS - cog 5.25 , K - MMSE
가 ChEI가 rCBF 0.62 , CDR 0.13 , CDR SB 0.44 , GDS 0.25 ,
NPI 1.12
4. ADCS - ADL 4.50
rCBF 가 ChEI가 ¹⁹ (postsy-
naptic) 가

rCBF

ChEI

AD

ChEI

가

가

가

REFERENCES

1. Davis P, Maloney AJF. Selective loss of central cholinergic neurons in Alzheimer's disease. *Lancet* 1976;2:1403.
2. Giacobini E, Becker R. Present progress and future development in the therapy for Alzheimer's disease. *Prog Clin Biol Res* 1989;317:1121-1154.
3. Brown DR, Hunter R, Wyper DJ, Patterson J, Kelly RC, Montaldi D, et al. Longitudinal changes in cognitive function and regional cerebral function in Alzheimer's disease: A SPECT blood flow study. *J Psychiatr Res* 1996;30:109-126.
4. Jagust W, Thisted R, Devous MD Sr, Van Heertum R, Mayberg H, Jobst K, et al. SEPCT perfusion imaging in the diagnosis of Alzheimer's disease: a clinical-pathologic study. *Neurology* 2001;56:950-956.
5. Birks JS, Melzer D, Beppu H. Donepezil for mild and moderate Alzheimer's disease. *Cochrane Database Syst Rev* 2000;4:CD001190.
6. Birks J, Grimley Evans J, Iakovidou V, Tsolaki M. Rivastigmine for Alzheimer's disease. *Cochrane Database Syst Rev* 2000;4:CD001191.
7. Qizilbash N, Birks J, Lopez Arrieta J, Lewington S, Szeto S. Tacrine for Alzheimer's disease. *Cochrane Database Syst Rev* 2000;2:CD000202.
8. Cummings JL. The role of cholinergic agents in the management of behavioural disturbances in Alzheimer's disease. *Int J Neuropsychopharmacol* 2000;3:21-29.
9. Nakano S, Asada T, Matsuda H, Uno M, Takasaki M. Donepezil hydrochloride preserves regional cerebral blood flow in patients with Alzheimer's disease. *J Nucl Med* 2001;42: 1441-1445.
10. Vennerica A, Shanks MF, Staff RT, Pestell SJ, Forbes KE, Gemmell HG, et al. Cerebral blood flow and cognitive responses to rivastigmine treatment in Alzheimer's disease. *Neuroreport* 2002;13:83-87.
11. Staff RT, Gemmell HG, Shanks MF, Murray AD, Venneri A. Changes in the rCBF images of patients with Alzheimer's disease receiving donepezil therapy. *Nuclear Med Commun* 2000;21:37-41.
12. Warren S, Hier DB, Pavel D. Visual form of Alzheimer's disease and its response to anticholinesterase therapy. *J Neuroimaging* 1998;8:249-252.
13. Mega MS, Dinov ID, Lee L, O'Connor SM, Masterman DM, Wilen B, et al. Orbital and dorsolateral frontal perfusion defect associated with behavioral response to cholinesterase inhibitor therapy in Alzheimer's disease. *J Neuropsychiatry Clin Neurosci* 2000;12: 209-218.
14. Cummings JL, Mega M, Gray K, Rosenberg-Thompson S, Carusi DA, Gornbein J. The Neuropsychiatric Inventory: comprehensive assessment of psychopathology in dementia. *Neurology* 1994;44:2308-2314.
15. Burns A, Philpot MP, Costa DC, Ell PJ, Levy R. The investigation of Alzheimer's disease with single photon emission tomography. *J Neurol Neurosurg Psychiatry* 1989;52: 248-253.
16. Hunter R, McLuskie R, Wyper D, Patterson J, Christie JE, Brooks DN, et al. The pattern of function-related regional cerebral blood flow investigated by single photon emission tomography with ^{99m}Tc-HMPAO in patients with presenile Alzheimer's disease and Korsakoff's psychosis. *Psychol Med* 1989;19:847-855.
17. Johnson KA, Mueller ST, Walshe TM, English RJ, Holman BL. Cerebral perfusion imaging in Alzheimer's disease. Use of single photon emission computed tomography and iofetamine hydrochloride I 123. *Arch neurol* 1987;44:165-168.
18. Neary D, Snowden JS, Shields RA, Burjan AW, Northen B, MacDermott N, et al. Single photon emission tomography using ^{99m}Tc-HMPAO in the investigation of dementia. *J Neurol Neurosurg Psychiatry* 1987;50:1101-1109.
19. Kasa P, Papp H, Kasa P Jr, Torok I. Donepezil dose-dependently inhibits acetylcholin esterase activity in various areas and in the presynaptic cholinergic and the postsynaptic cholinceptive enzyme-positive structures in the human and rat brain. *Neuroscience* 2000;101:89-100.
20. Furey ML, Pietrini P, Haxby JV. Cholinergic enhancement and increased selectivity of perceptual processing during working memory. *Science* 2000;290:2315-2319.
21. Scremin OU, Li MG, Scremin AM, Jenden DJ. Cholinesterase inhibition improves blood flow in ischemic cerebral cortex. *Brain Res Bull* 1997;42:59-70.
22. Stern RG, Mohs RG, Davidson M, Schmeidler J, Silverman J, Kramer GE, et al. A longitudinal study of Alzheimer's disease: measurement, rate and predictors of cognitive deterioration. *Am J Psychiatry* 1994;151:390-396.
23. Brooks JO 3rd, Yesavage JA, Taylor J, Friedman L, Tanke ED, Luby V, et al. Cognitive decline in Alzheimer's disease: elaborating on the nature of the longitudinal factor structure of the Mini-Mental State Examination. *Int Psychogeriatr* 1993;5:135-146.
24. Salmon DP, Thal LJ, Butters N, Heindel WC. Longitudinal evaluation of dementia of the Alzheimer's type: a comparison of three standardized mental status examinations. *Neurology* 1990;40:1225-1230.
25. Berg L, Miller JP, Baty J, Rubin EH, Morris JC, Figiel G. Mild senile dementia of the Alzheimer type. 4. Evaluation of intervention. *Ann Neurol* 1992;31:242-249.